



**Now available in Brass or Acetal**

# OddBall™



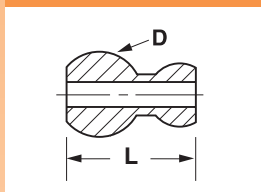
## SCREW-LOCK BALLS THAT ADAPT YOUR FAVORITE HOSES AND NOZZLES TO FIT YOUR CNC LATHE

- Allows Loc-Line\*, Snap-Loc\*\* and 1/8 NPT/BSPT fittings to be used on CNC lathes that employ screw-lock balls.
- Sizes available to fit almost every machine or toolholder
- Choose acetal material for low pressures up to 150 psi (10 bar) †
- Choose brass material for higher pressures up to 500 psi (33 bar) †

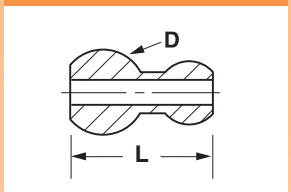
### DIMENSIONS IN INCHES (except as noted)

Mtl	Part No.	Nom. Dia. "D"	Adaptor Type	Through hole	Length "L"	Pkg. Qty.
<b>ACETAL</b>	OB06501	10 mm	1	.25 dia.	.63	5
	OB06502	12 mm	1	.25 dia.	.67	5
	OB06504	12 mm	2	.25 dia.	.76	5
	OB06506	12 mm	4	.25 dia.	.91	5
	OB06508	14 mm	1	.25 dia.	.76	5
	OB06510	14 mm	2	.25 dia.	.84	5
	OB06512	14 mm	3	.25 dia.	.38	5
	OB06514	15 mm	1	.25 dia.	.81	5
	OB06516	15 mm	2	.25 dia.	.89	5
	OB06518	15 mm	3	.25 dia.	.43	5
	OB06526	22 mm	1	.25 dia.	1.12	5
	OB06528	22 mm	2	.25 dia.	1.20	5
	OB06530	22 mm	3	.25 dia.	.74	5
	OB06532	1/2 inch	1	.25 dia.	.71	5
OB06534	1/2 inch	2	.25 dia.	.79	5	
OB06536	1/2 inch	4	.25 dia.	.94	5	
OB06538	5/8 inch	1	.25 dia.	.87	5	
OB06540	5/8 inch	2	.25 dia.	.95	5	
OB06542	5/8 inch	3	.25 dia.	.47	5	
<b>BRASS</b>	OB06601	10mm	1	.25 dia.	.64	5
	OB06602	12mm	1	.25 dia.	.67	5
	OB06606	12mm	4	7/32 hex	.90	5
	OB06608	14mm	1	.25 dia.	.77	5
	OB06612	14mm	3	7/32 hex	.39	5
	OB06614	15mm	1	.25 dia.	.81	5
	OB06618	15mm	3	7/32 hex	.45	5
	OB06626	22mm	1	.25 dia.	1.15	5
	OB06630	22mm	3	7/32 hex	.77	5
	OB06632	1/2 inch	1	.25 dia.	.71	5
	OB06636	1/2 inch	4	7/32 hex	.94	5
	OB06638	5/8 inch	1	.25 dia.	.87	5
OB06642	5/8 inch	3	7/32 hex	.49	5	

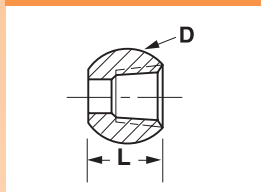
TYPE 1 - Fits 1/4" LOC-LINE\*



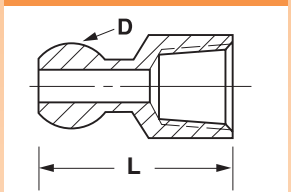
TYPE 2 - Fits 1/4" SNAP-LOC\*\*



TYPE 3 - Fits 1/8 NPT/BSPT

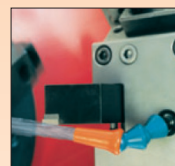


TYPE 4 - Fits 1/8 NPT/BSPT



Maximum Pressure: Acetal: 150 PSI (10 bar) †  
Brass: 500 PSI (33 bar) †

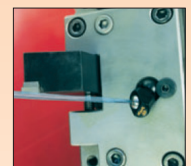
Maximum Operating Temperature: Acetal: 160°F (70°C)  
Brass: 300°F (150°C)



TYPE 1 **OddBall** attached to 1/4" Loc-Line\* hose.



TYPE 2 **OddBall** attached to 1/4" Snap-Loc\*\* hose.



TYPE 3 **OddBall** threaded onto 1/8 NPT/BSPT TurretJet.

**Ordering Information:** Measure the diameter of the original ball in your machine and order the nominal diameter that suits your favorite nozzle system.

\* LOC-LINE IS A TRADEMARK OF LOCKWOOD PRODUCTS INC. \*\* SNAP-LOC IS A TRADEMARK OF CEDARBURG INDUSTRIES

† DO NOT EXCEED MAXIMUM PRESSURE RATING OF MATING HOSE SYSTEM

WE RESERVE THE RIGHT TO CHANGE SPECIFICATIONS WITHOUT NOTICE OR OBLIGATION.